

PT-CON-WP8B

Version 2.1 | 05/2024

8 Button Control Panel Wall Plate Module

Content

Preparation.....

1

Programming.....

2

1. Panel Set.....

2

2. Action List

4

3. Event Set.....

5

Load programming on wallplate.....

6

Appendix.....

7

1. RS232 Library-Function.....

7

2. IR Library-Function

8

3. Loop-Function.....

9

4. Example

12

Preparation

1.

Download programming software and save it locally (no installation necessary):
[PT-CON-WP8](#)
2.

A USB connection is best suited for programming (USB-A to mini-USB cable is required).
Optionally, programming can also be done via RS232 (connection is via mini phoenix terminals).

Contact

Purelink GmbH
Von-Liebig-Str. 10
48432 Rheine | Germany

+49 5971 800 299-0

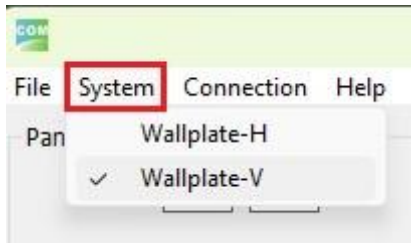
+49 5971 800 299-99

info@purelink.de

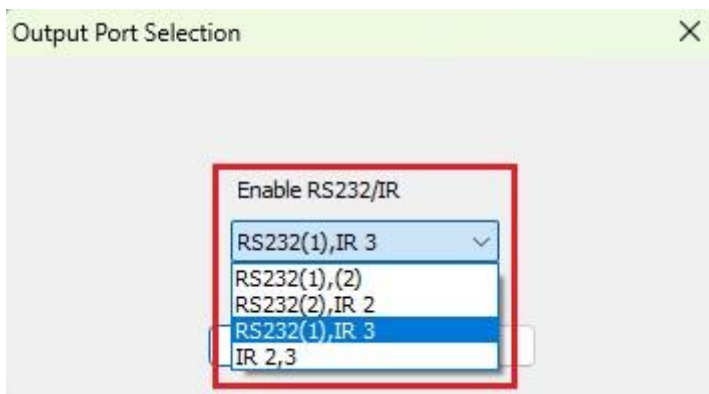
*All information is subject to confirmation and non-binding. Technical changes, printing errors and mistakes excepted.

Programming

1. Panel Set



1. First, select the correct wallplate design (H = horizontal, V = vertical) via "System".

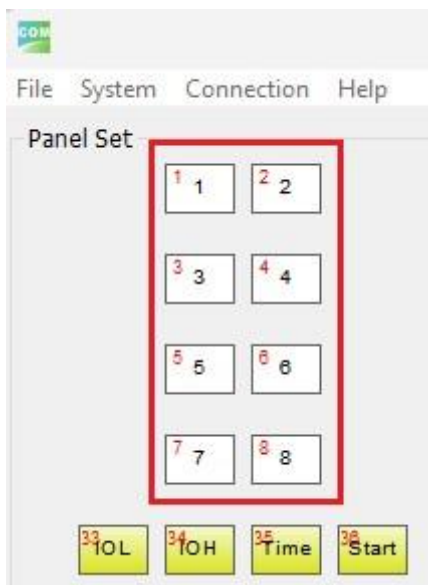


1. Then select the desired configuration of the rear connectors of the PT-CON-WP8B from the drop-down menu (see manual for more information).

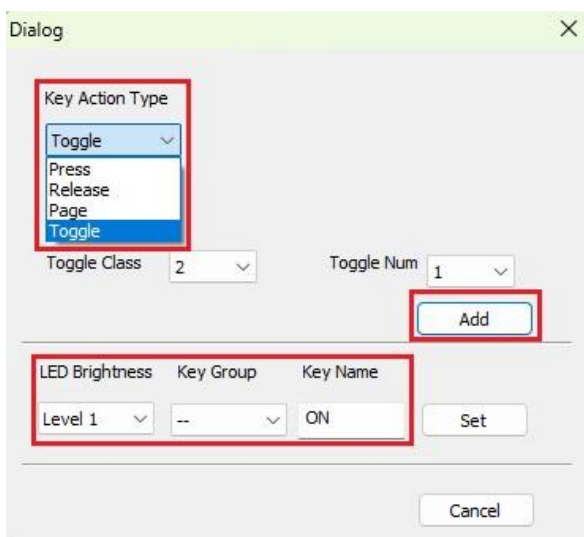
Contact

Purelink GmbH
Von-Liebig-Str. 10
48432 Rheine | Germany

+49 5971 800 299-0
+49 5971 800 299-99
info@purelink.de



1. Then select a key (1-8 for the corresponding buttons on the front of the PT-CON-WP8B) by clicking on it.



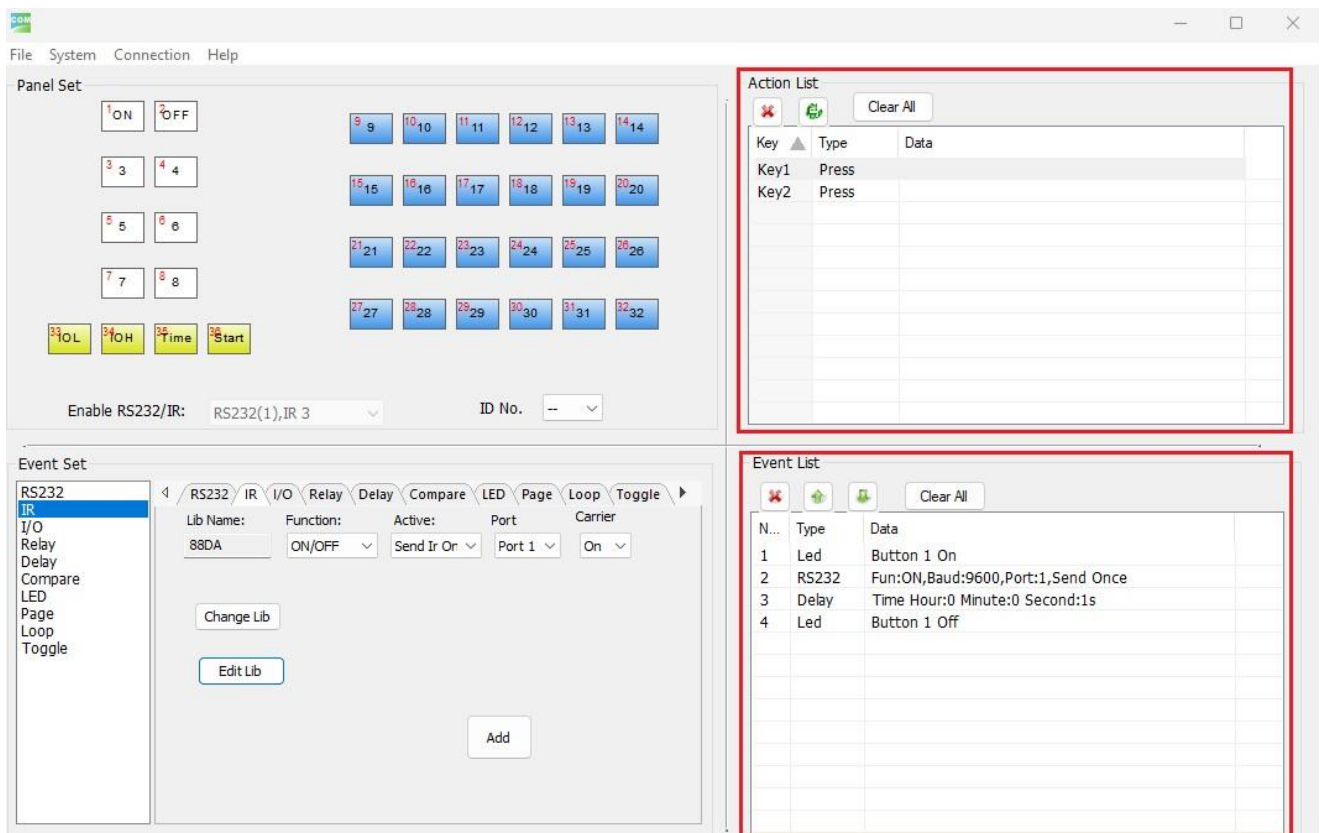
1. In the window that opens, select the appropriate "Key Action Type" in the drop-down menu (usually "Press", but other actions can also be selected).
2. Here you can also adjust the name of the key and the LED brightness and assign the key to a "Key Group".
3. Then press "Add" and the key will appear in the "Action List".

Contact

Purelink GmbH
Von-Liebig-Str. 10
48432 Rheine | Germany

+49 5971 800 299-0
+49 5971 800 299-99
info@purelink.de

2. Action List



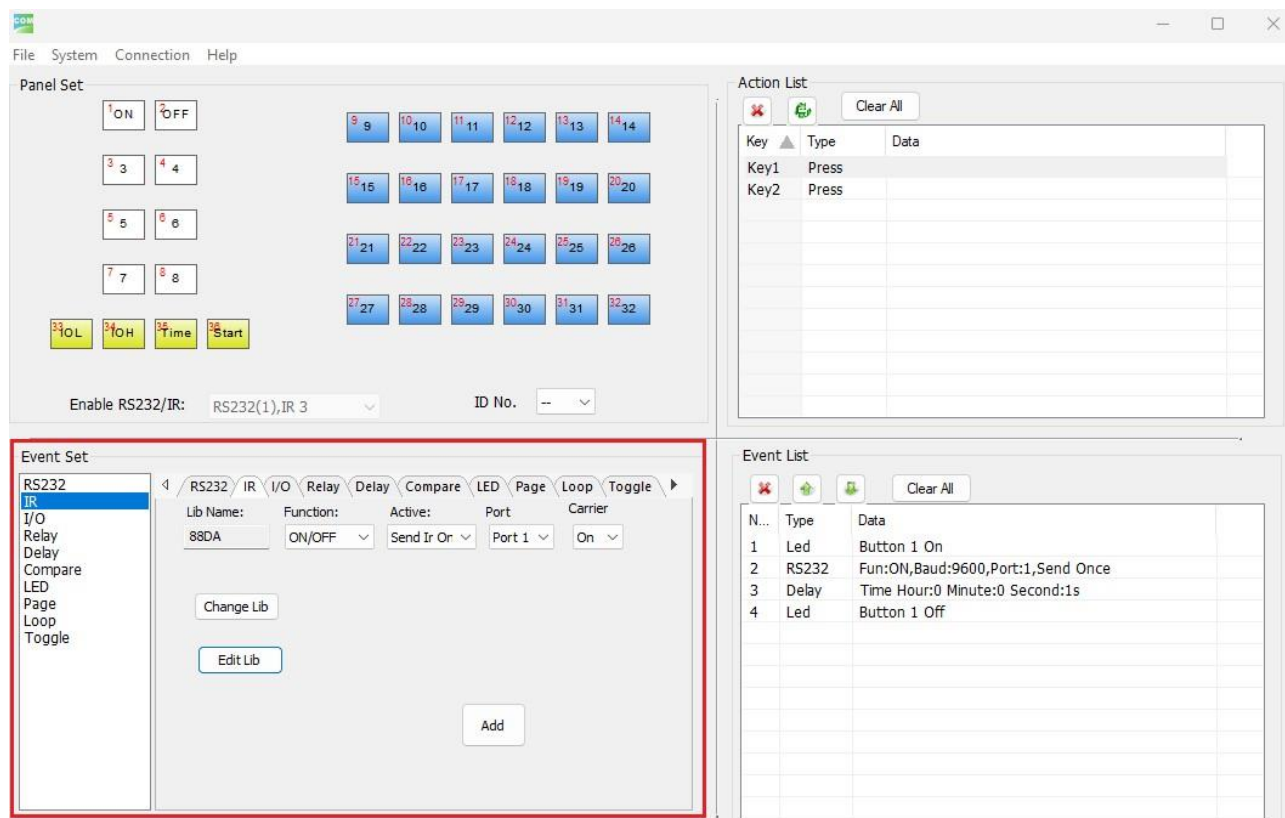
1. The "Action List" now contains all keys added in this way with the Key Action Type and Data (only for Toggle and Page).
2. Depending on which key we mark, we see the corresponding "Event List" underneath.

Contact

Purelink GmbH
Von-Liebig-Str. 10
48432 Rheine | Germany

+49 5971 800 299-0
+49 5971 800 299-99
info@purelink.de

3. Event Set



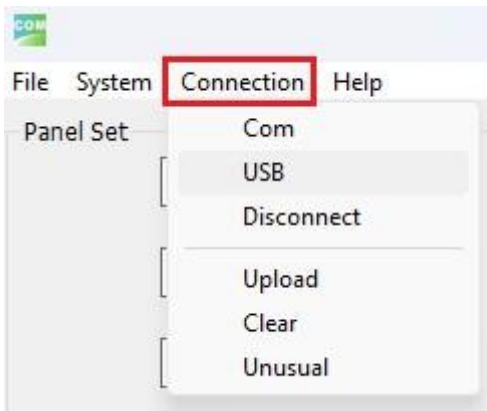
1. Here you can add individual functions to the Event List of the key selected in the Action List.
2. Enter a serial command in ASCII or HEX via "RS232" and set the appropriate connection parameters (baud rate etc.), then use "Active" and "Port" to set how often or via which port the command is sent (via "Edit Lib" you can also create a library of RS232 commands for e.g. a device or an installation, more on this in the appendix at the end of the manual).
3. If a carriage return and/or line feed is required, the radio button must be changed from ASCII to HEX and a "0d" (carriage return) and "0a" (line feed) must be added.
4. Infrared commands can also be stored via "IR" and output again from the wall panels (here only via the "Edit Lib" function, more on this in the appendix).
5. Delays and LED state changes can also be made and added to the event list.
6. All events are added to the event list via the "Add" button.

Contact

Purelink GmbH
Von-Liebig-Str. 10
48432 Rheine | Germany

+49 5971 800 299-0
+49 5971 800 299-99
info@purelink.de

Load programming on wallplate



1. Connect to the wallplate via "Connection > USB" (optionally via "COM" for RS232 programming connection), the message "connect success" will appear.
2. Then load the programming onto the wallplate via "Connection > Upload", the message "Clear all data? Yes or No?", confirm it with "OK".
3. Then wait until the upload is complete (dialog box closes automatically at the end, no success message appears!).

Done!

Contact

Purelink GmbH
Von-Liebig-Str. 10
48432 Rheine | Germany

+49 5971 800 299-0
+49 5971 800 299-99
info@purelink.de

Appendix

1. RS232 Library-Function

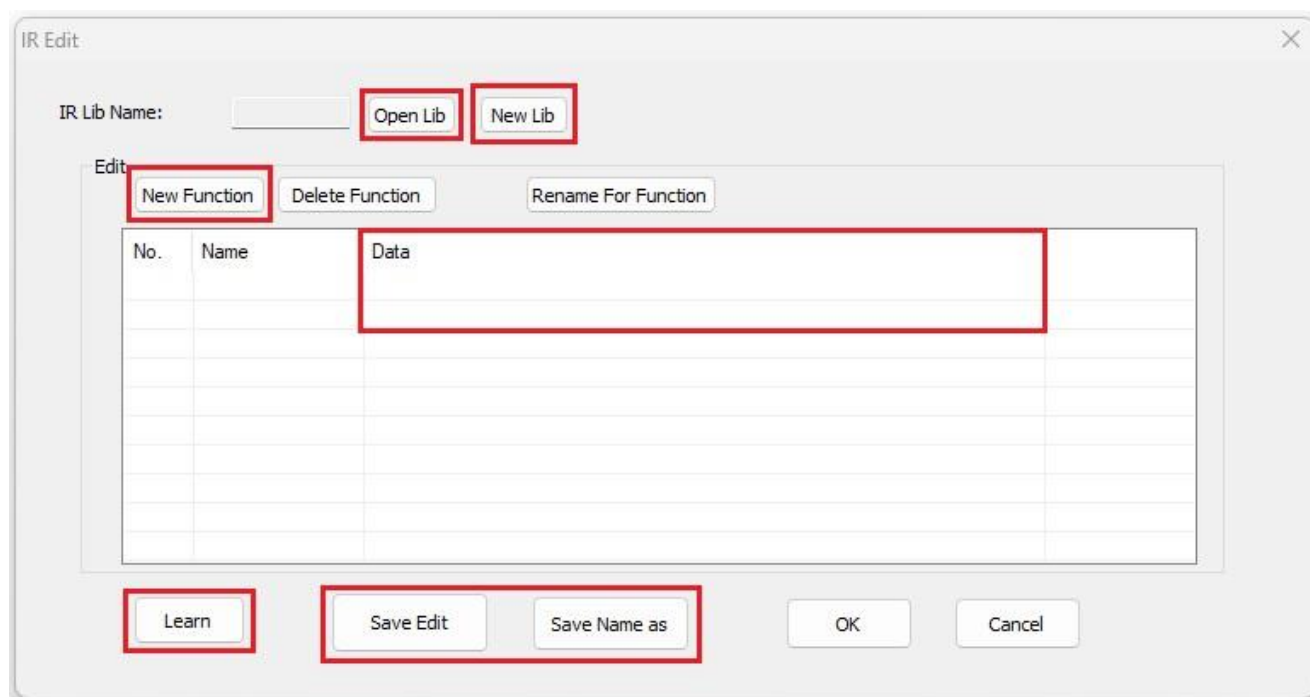
1. "Edit Lib" can be used to create and save a library of RS232 commands.
To do this, click on "New Lib" and give the library a name.
2. Then add RS232 commands via "New Function" (as hex or ASCII with the correct parameters) and save with "Save Edit" (then save under the name of the library) or "Save Name as" (then you can assign your own name).
3. With "Open Lib", an existing library can also be opened and modified or simply used.

Contact

Purelink GmbH
Von-Liebig-Str. 10
48432 Rheine | Germany

+49 5971 800 299-0
+49 5971 800 299-99
info@purelink.de

2. IR Library-Function



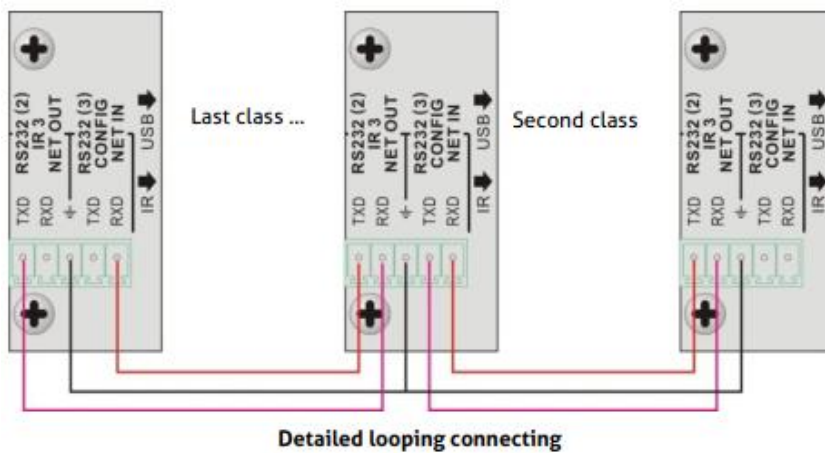
1. "Edit Lib" can be used to create and save a library of IR commands.
To do this, click on "New Lib" and give the library a name.
1. Then name a new IR command via "New Function" and then teach it with "Learn" on the IR receiver of the wall panel (press the desired button on the IR remote control and the corresponding IR command will be displayed and stored in the "Data" field).
2. Save with "Save Edit" (then save under the name of the library) or "Save Name as" (then you can assign your own name).
3. With "Open Lib", an existing library can also be opened and modified or simply used.

Contact

Purelink GmbH
Von-Liebig-Str. 10
48432 Rheine | Germany

+49 5971 800 299-0
+49 5971 800 299-99
info@purelink.de

3. Loop-Function

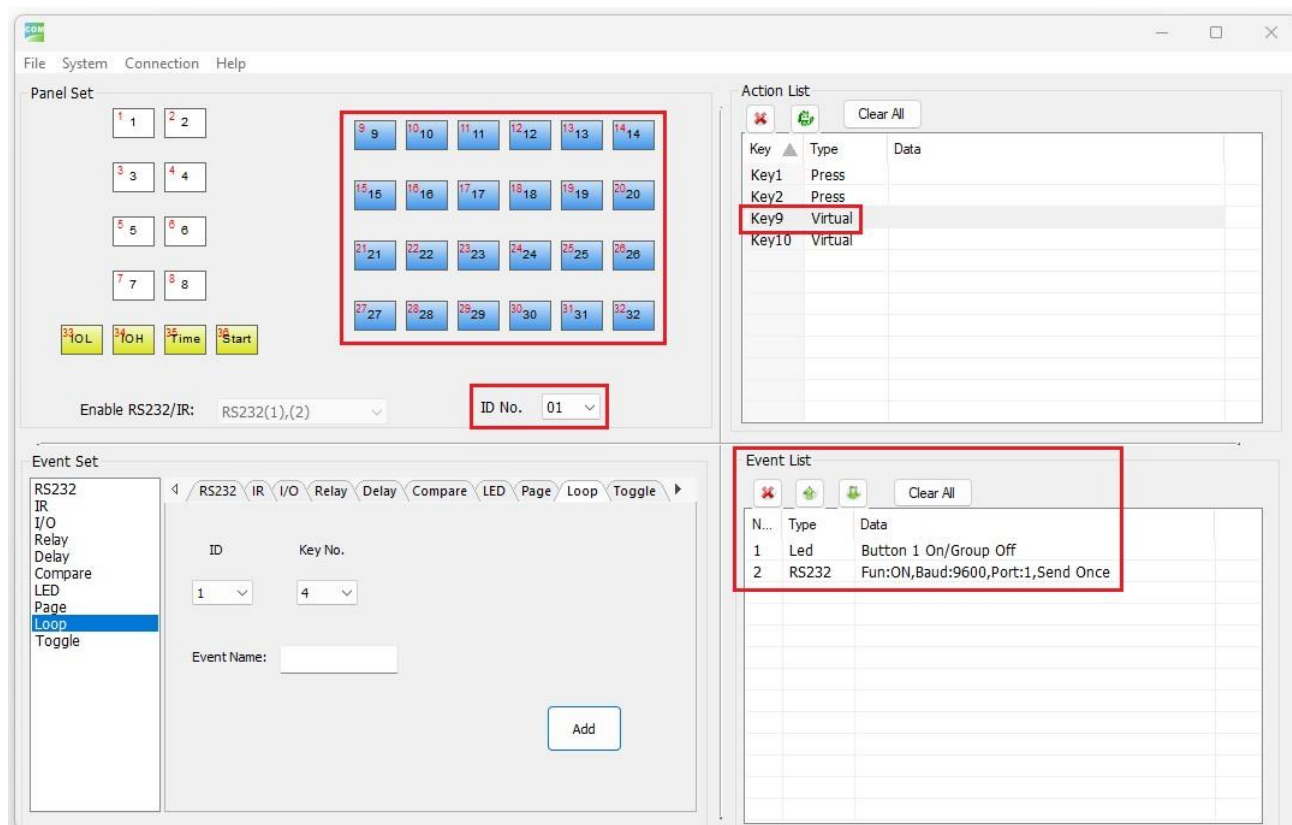


1. The figure above shows the correct wiring of the wallplates if the loop function is to be used.
2. It should be noted that if only two wallplates are connected to each other, the TXD "NET OUT" will go from the first wallplate to the RXD "NET IN" of the second wallplate.
The RXD "NET OUT" from the first wallplate goes to the TXD "NET OUT" of the second wallplate (and not to the TXD "NET IN").

Contact

Purelink GmbH
Von-Liebig-Str. 10
48432 Rheine | Germany

+49 5971 800 299-0
+49 5971 800 299-99
info@purelink.de

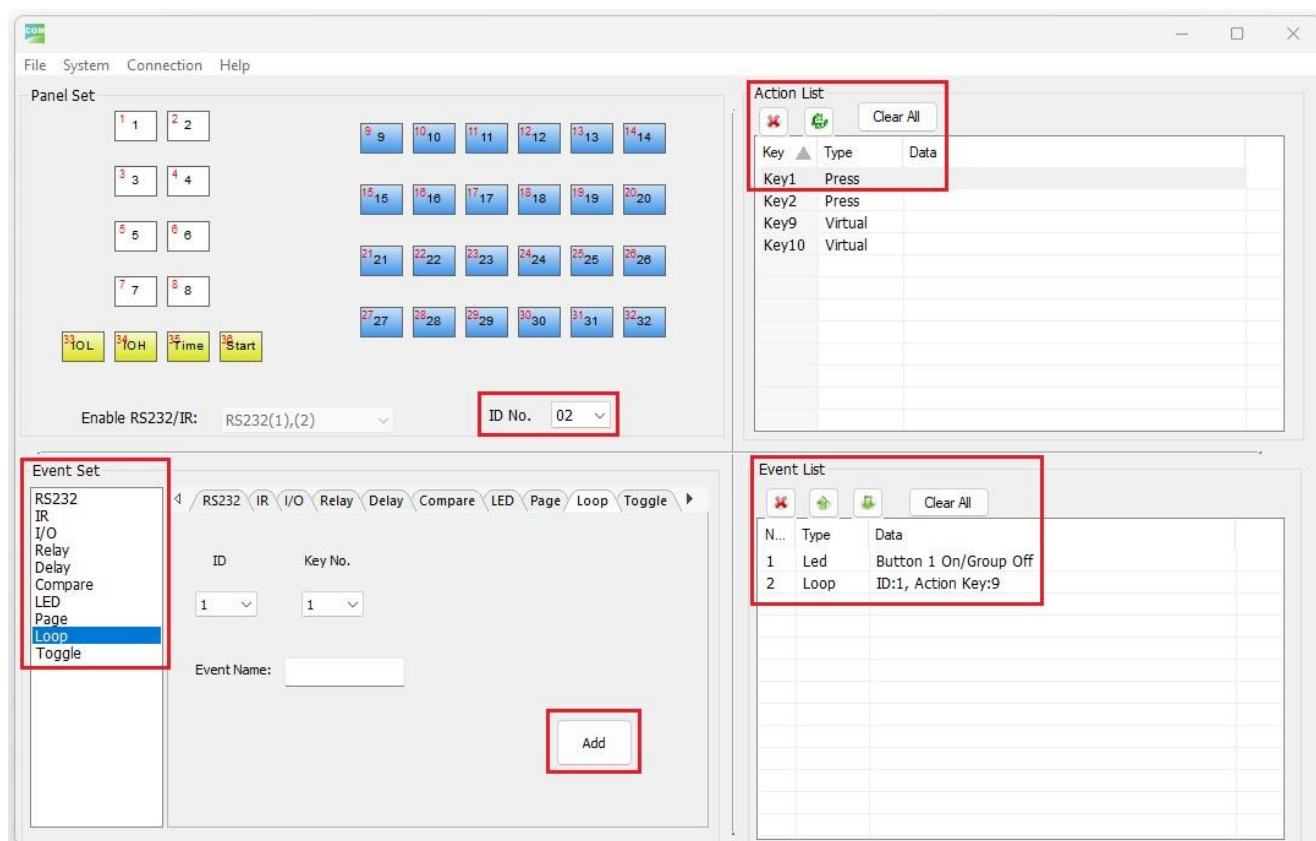


1. To use the loop function, each wallpanel must now be assigned a unique ID (from 1-99, but 10 or less should be used to ensure functionality).
2. One (or more) virtual keys (e.g. Key 9) are now added to the "Action List" of the wallpanel (e.g. ID 1) that will later be controlled by another wallpanel (e.g. ID 2).
3. In the "Event List" of this virtual key, the desired functions are now added, which are later to be triggered by the looped wallpanel (here from ID 2).

Contact

Purelink GmbH
Von-Liebig-Str. 10
48432 Rheine | Germany

+49 5971 800 299-0
+49 5971 800 299-99
info@purelink.de



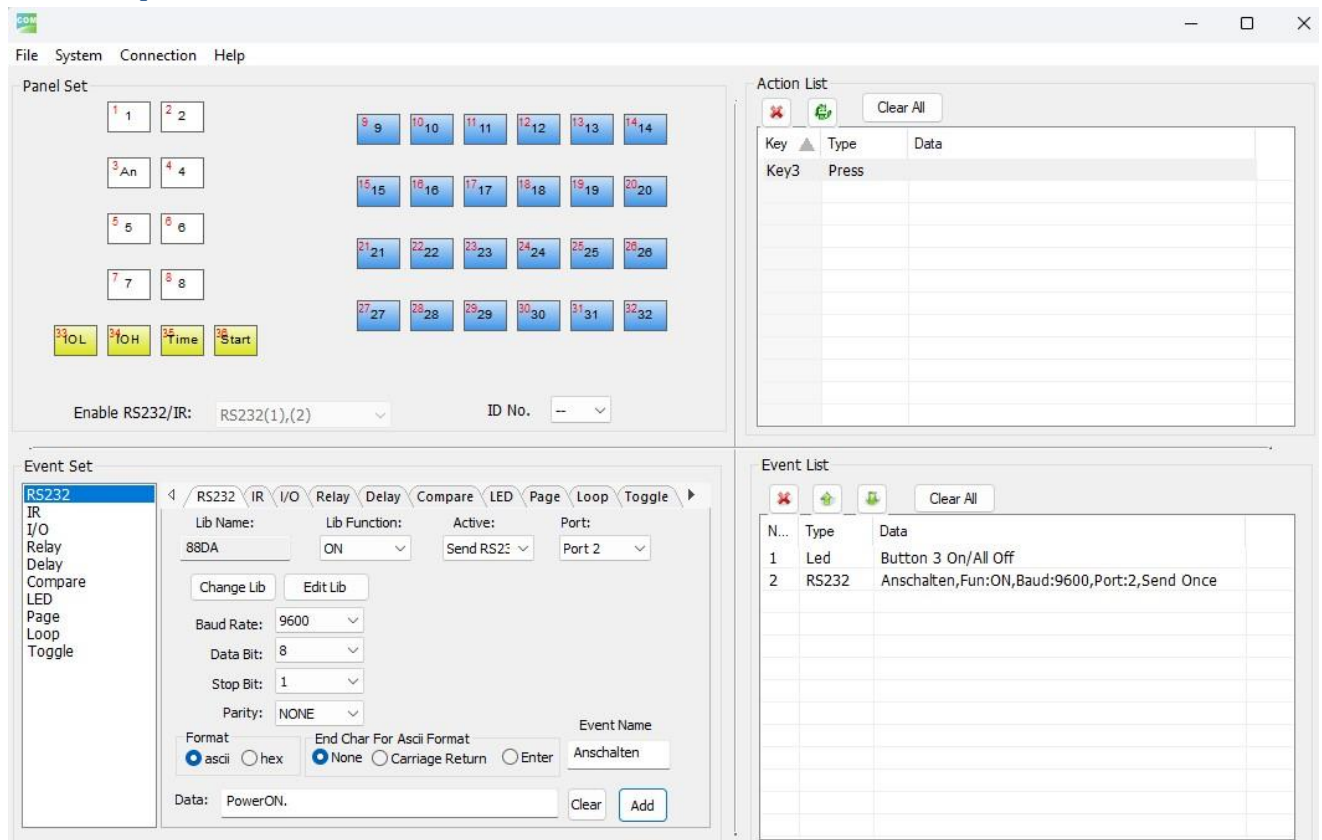
1. Now a key (e.g. Key 1) is added to the "Action List" in the looped wall panel (ID 2) (not a virtual one!) and the "Loop" settings are called up via "Event Set".
2. There, the ID of the wallpanel to be controlled (in our example ID 1) and the key to be triggered (here the virtual key 9) are entered together with an "Event Name" (not mandatory) and added to the "Event List" via "Add".
3. Now, by pressing Key 1 on the looped wall panel with ID 2, the function of the virtual Key 9 on the wall panel with ID 1 can be triggered, which in turn passes on the triggered command to the device to be controlled.

Contact

Purelink GmbH
Von-Liebig-Str. 10
48432 Rheine | Germany

+49 5971 800 299-0
+49 5971 800 299-99
info@purelink.de

4. Example



1. First, click on a key in the "Panel Set" that is to be programmed (here key "3").

Contact

Purelink GmbH
Von-Liebig-Str. 10
48432 Rheine | Germany

+49 5971 800 299-0
+49 5971 800 299-99
info@purelink.de

Dialog

Key Action Type
Press

Add

LED Brightness Key Group Key Name
Level 5 -- An Set

Cancel

1. Then select and enter the "Key Action Type" (here "Press"), "LED Brightness" (here "Level 5") and "Key Name" (here "On") and then click "Add" to add the key to the "Action List".

Action List

Clear All

Key	Type	Data
Key3	Press	

Event Set

RS232 IR I/O Relay Delay Compare LED Page Loop To

Button Light Action
Button 3 On/All Off

Add

Contact

Purelink GmbH
Von-Liebig-Str. 10
48432 Rheine | Germany

+49 5971 800 299-0
+49 5971 800 299-99
info@purelink.de

1. Then use "Event Set" > "LED" to make the settings for the LED. To do this, select the desired button (here "Button 3") with the drop-down "Button" and the desired action (here "On/All Off") via "Light Action". Then add the settings to the "Event List" via "Add".

Event List		
Clear All		
N...	Type	Data
1	Led	Button 3 On/All Off

Event Set	RS232	IR	I/O	Relay	Delay	Compare	LED	Page	Loop	Toggle
<div> <div>RS232</div> <div>IR</div> <div>I/O</div> <div>Relay</div> <div>Delay</div> <div>Compare</div> <div>LED</div> <div>Page</div> <div>Loop</div> <div>Toggle</div> </div>	<div> <div>Lib Name:</div> <div>88DA</div> </div> <div> <div>Lib Function:</div> <div>ON</div> </div> <div> <div>Active:</div> <div>Send RS232</div> </div> <div> <div>Port:</div> <div>Port 2</div> </div> <div> <div>Change Lib</div> <div>Edit Lib</div> </div> <div> <div>Baud Rate:</div> <div>9600</div> </div> <div> <div>Data Bit:</div> <div>8</div> </div> <div> <div>Stop Bit:</div> <div>1</div> </div> <div> <div>Parity:</div> <div>NONE</div> </div> <div> <div>Format</div> <div><input checked="" type="radio"/> ascii <input type="radio"/> hex</div> </div> <div> <div>End Char For Ascii Format</div> <div><input checked="" type="radio"/> None <input type="radio"/> Carriage Return <input type="radio"/> Enter</div> </div> <div> <div>Event Name</div> <div>Anschalten</div> </div> <div> <div>Data:</div> <div>PowerON.</div> </div> <div> <div>Clear</div> <div>Add</div> </div>									

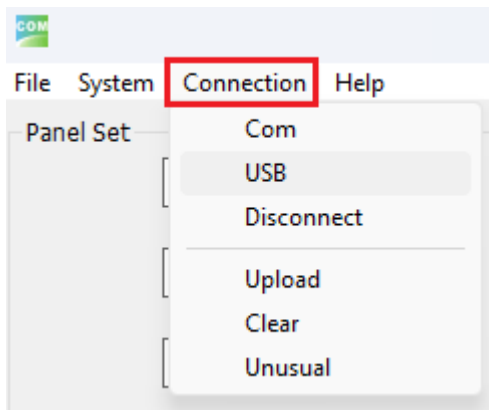
1. Now use "Event Set" > "RS232" to insert the RS232 command to be executed by the selected key. To do this, either enter the command directly in "Data:" or select it from a library (see "RS232 Library Function"). In addition, if necessary. Adjust the RS232 parameters (e.g. "BaudRate") and send settings (e.g. "Port:") and finally add them to the "Event List" with "Add".

Event List		
Clear All		
N...	Type	Data
1	Led	Button 3 On/All Off
2	RS232	Anschalten, Fun: ON, Baud: 9600, Port: 2, Send Once

Contact

Purelink GmbH
Von-Liebig-Str. 10
48432 Rheine | Germany

+49 5971 800 299-0
+49 5971 800 299-99
info@purelink.de



Finally, via "Connection" > "Upload" load the settings made to the connected wallplate.

Done!

Contact

Purelink GmbH
Von-Liebig-Str. 10
48432 Rheine | Germany

+49 5971 800 299-0
+49 5971 800 299-99
info@purelink.de

*All information is subject to confirmation and non-binding. Technical changes, printing errors and mistakes excepted.